



European Journal of Histochemistry

SUPPLEMENTARY MATERIAL

DOI: [10.4081/ejh.2025.4175](https://doi.org/10.4081/ejh.2025.4175)

Reliable hexokinase 3 protein detection in human cell lines and primary tissue

Yasmeen H. Mady,^{1,2,3*} Carmen G. Kalbermatter,^{1,2*} Maarij Khan,¹ Anna M. Schläfli,¹
Rina Mehmeti,^{1,2} Inti Zlobec,¹ Lucine Christe,¹ Mario P. Tschan^{1,2}

¹Institute of Tissue Medicine and Pathology, University of Bern, Switzerland

²Graduate School for Cellular and Biomedical Sciences, University of Bern, Switzerland

³Department of Clinical Pathology, South Egypt Cancer Institute, Assiut University, Assiut, Egypt

*These authors contributed equally to this work.

Correspondence: Mario P. Tschan, Institute of Tissue Medicine and Pathology, University of Bern, Murtenstr. 31, 3008 Bern, Switzerland. E-mail: mario.tschan@unibe.ch

Key words: hexokinase; HK3; immunohistochemistry; leukemia; myeloid cells; antibody.

Supplementary Figure S1.

TIDE analysis of HK3 KO clones. **A)** TIDE analysis of HK3 KO clones, deletion of approx. 550bp marked with squared brackets and exon affected underlined. **B)** PCR reaction (with fwd primer: atggttgaccagggtgtcc and rev primer: ggggtggggaggattagact) run on 1% Agarose gel to verify deletion.

A

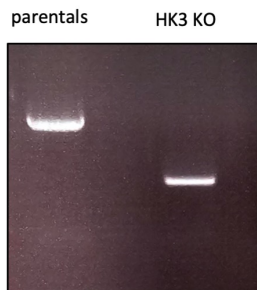
parentals

```
CTGTGGAAGCTCATGGACTCCATTGGGTCTTC[AGGGTTGCGGCAGGGGGAAGAAACCCTGAGTTGC  
TCTGAGGAGGGCTTGCCCGGGCCCTCAGACAGCTCAGAGCTGGTAAGTTCAGCACTGGGTTCTGT  
TCATGCTTGTCTAAGGCCTTCAAGAGCAGCGTGACTGAAGCTGCCATGGGGCCCTGGGCTCTACCCA  
TGCAGCCCTTTCCACTGAGCTTTTCATATCTGAGCTGGTAACGATCTCCTTTCATGCTCCAAACA  
CAAGGTTGGGCTGATCATCTTACAGGTGATGAAGAGGGATATAGAGAAGTGTATGACTTGAGTTTA  
AGACATGACAGGAGCTTGAGCTGAGGTGTTTCAGCTCCAAACATGTCATTTTTGCCACCTGCCACAC  
AGGTGCCGCTCCCGCCCAAGTGGGTGACACAGTCTAGAGTGGACTTTCAGGGTTATCTGGTCAA  
AAGTTGTGTTCTTGAGACCTTTCCTTCCCGCTCTCCAGTTCCTCCTGCATGTCTCCCTCAATGTAGCC  
GCTACAATCAGGCACACAGACGATTTTAGTGCCAAACTCATGCCTG[AGGCTTGCTCAGAAGTGAGTT  
TCTTCTTTTTCTGTCATCTTGACCAAGATTTAGAAGCTGTCTCATACCACACCCTTGAGCAGGAAACTCT  
TGTGTAAGCCATTTTCATATCTCTTAGTCTCTGTTTCCTCATCAGTAAAATGGAGGAAAATAAAGTCTAA  
TCCTTCCCCACCCC
```

HK3 KO

```
CTGTGGAGCTCATGGACTCCATTGGGTCTTC[AGGCTTGCTCAGAAGTGAGTTTCTTCTTTTTCTGTCA  
TCTTGACCAAGATTTAGAAGCTGTCTCATACCACACCCTTGAGCAGGAAACTCTTGTGTAAGCCATTT  
ATATCTCTTAGTCTCTGTTTCCTCATCAGTAAAATGGAGGAAAATAAAGTCTAATCCTCCCCACCCC
```

B



Supplementary Figure 2.

HK3 upregulation upon myeloid differentiation of myeloid leukemic cells. **A)** Western blot analysis of HK1 and HK2 levels in solid cancer cell lines (A549 and HCT116), HL60 control and HK3 KO cell clones \pm 4 days of ATRA treatment, THP1 control and HK3 KO cell clones \pm 24 h PMA treatment with the indicated antibodies. Total protein was used as loading control. **B)** HK3 western blot analysis in HL60 control and HK3 knockout cells \pm 48 h PMA treatment using HPA056743 anti-HK3 antibody. Total protein was used as loading control.

