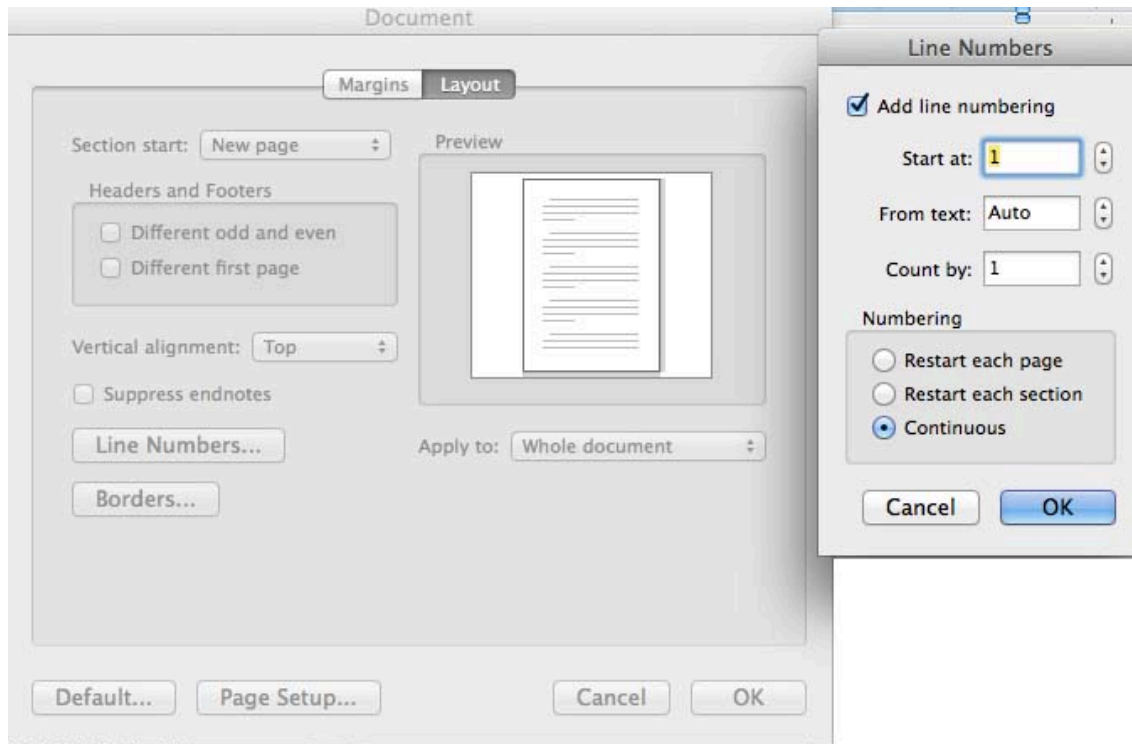


manuscript example

General information:

The manuscript must be prepared with a standard word processor (preferably Microsoft Word or OpenOffice). Pages should be in A4 format and numbered. Times New Roman 12 pt is the advised font. Lines should be left numbered *in continuum**, to make the referees' work easier, double-spaced and without interruption of page.

* **HOW TO ADD LINES NUMERATION** -> see figure below



manuscript example

Title (without acronyms)

Author One,¹ Author Two,² Author Three,² Author Four³

¹Department, Institution, City, State or Province, Country

²Department, Institution, City, State or Province, Country

³Department, Institution, City, State or Province, Country

Correspondence: Author One, Department, Institution, address, postal code, city, State or

Province, Country. Tel. +39.001.111111 - Fax: +39. 001.222222. Email:

correspondingauthor@email.com

Acknowledgments: *Acknowledgements should include contributions from anyone who does not meet the criteria for authorship.*

Funding: *Funder name and/or grant/award numbers, if any.*

Contribution: *Acknowledgement that all authors have contributed significantly and that all authors agree with the content of the manuscript.*

Conflict of interest: *The authors declare that no conflict of interest / Author One is employed by..... Author Two received grants from*

manuscript example

Abstract

1 *The abstract should start with a clear statement of the objective and must conclude with*
2 *one or two sentences that highlight important conclusions and should summarise*
3 *pertinent results in a brief but understandable form. References or tables are never cited*
4 *in the abstract.*

5 Please consult the author guidelines for the journal to which you are submitting in order
6 to confirm that your manuscript will comply with the journal's requirements.

7

8

9

10 **Key words:** XXXX, XXXXXX, XXXXXX, XXXXX, XXXXX (maximum 6 key words).

11

manuscript example

12 **Introduction**

13 **TEXT**

14 The European Journal of Histochemistry was founded in 1954 by Maffo Vialli
15 and published till 1979 under the title of Rivista di Istochimica Normale e Patologica,
16 from 1980 to 1990 as Basic and Applied Histochemistry and in 1991 as European Journal
17 of Basic and Applied Histochemistry. It is now published under the auspices of the
18 University of Pavia, Italy.¹ The European Journal of Histochemistry² is the official organ
19 of the Italian Society of Histochemistry and a member of the journal subcommittee of the
20 International Federation of Societies for Histochemistry and Cytochemistry (IFSHC).^{3,4}
21 The Journal publishes Original papers, Technical reports, Reviews, Brief Reports, Letters
22 to the Editor, Book reviews, Views and Comments, concerning investigations performed
23 with the aid of biophysical, biochemical, molecular-biological, enzymatic,
24 immunohistochemical, cytometric, and image analysis techniques.⁵⁻⁸

25
26 **Materials and Methods***

27 **Subheading(s) if needed (e.g., Animals – Statistical analysis)**

28 **TEXT**.....

29 When reporting experiments on human subjects, authors should indicate whether the
30 procedures followed were in accordance with the ethical standards of the responsible
31 committee on human experimentation (institutional and national)

32 e.g., *The experiment has been conducted under the authorization of the Ethic*
33 *Committee of the University of Pavia (Italy), with document no. 1234567.....*

34

35 (Table

36 1)

manuscript example

37
.....

38
.....

39 (Table 2).
.....

40
.....

41
.....

42

43 **Subheading**

44
.....

45
.....

46
.....

47
.....

48(Table 3).
.....

49

manuscript example

50 **Results**

51 **Subheading(s) if needed (e.g., Cell differentiation)**

52 **TEXT**.....

53

54

55 (Figure 1).

56
.....

57 (Table 3 - Figure 2).

58
.....

59

60

61(Table 4).

62
.....

63

64

65

66

manuscript example

References

- 67 1. Liu JY, Martinian L, Thom M, Sisodiya SM. Immunolabeling recovery in archival,
68 post-mortem, human brain tissue using modified antigen retrieval and the catalyzed
69 signal amplification system. *J Neurosci Methods* 2010;190:49-56.
- 70 2. Eisele S, Krumbholz M, Fischer MT, Mohan H, Junker A, Arzberger T, et al.
71 Prospects of transcript profiling for mRNAs and MicroRNAs using formalin-fixed
72 and paraffin-embedded dissected autoptic multiple sclerosis lesions. *Brain Pathol*
73 2012;22:607-18.
- 74 3. Carturan E, Tester DJ, Brost BC, Basso C, Thiene G, Ackerman MJ. postmortem
75 genetic testing for conventional autopsy–negative sudden unexplained death: An
76 evaluation of different DNA extraction protocols and the feasibility of mutational
77 analysis from archival paraffin-embedded heart tissue. *Am J Clin Pathol*
78 2008;129:391-7.
- 79 4. Wimmer I, Tröscher AR, Brunner F, Rubino SJ, Bien CG, Weiner HL, et al.
80 Systematic evaluation of RNA quality, microarray data reliability and pathway
81 analysis in fresh, fresh frozen and formalin-fixed paraffin-embedded tissue samples.
82 *Sci Rep* 2018;8:6351.
- 83 5. Marwitz S, Kolarova J, Reck M, Reinmuth N, Kugler C, Schädlich I, et al. The tissue
84 is the issue: improved methylome analysis from paraffin-embedded tissues by
85 application of the HOPE technique. *Lab Invest* 2014;94:927-33.
- 86 6. Sas L, Van Laere S, Dierick AM, Duwel V, De Pauw A, Van Den Eynden G, et al.
87 Study assessing the quality of quantification of estrogen receptor protein expression
88 by immunohistochemistry and gene expression in breast cancer. *Pathol Res Int*
89 2014;2014:372653.
- 90 7. Engel KB, Moore HM. Effects of preanalytical variables on the detection of proteins
91 by immunohistochemistry in formalin-fixed, paraffin-embedded tissue. *Arch Pathol*
92 *Lab Med* 2015;135:537-43.
- 93 8. Wilson, R.P., 1994. Utilization of dietary carbohydrate by fish. *Aquaculture* 124:67-
94 80.
- 95 9.
- 96 10.
- 97 11.

98

manuscript example

99 Table 1. Adult fixation protocols xxxxxxxx.

Patients (age)	Intraepithelial, tn/1 Total number	Intraepithelial, an/1 Average number	Subepithelial, tn/1 Total number	Subepithelial, an/1 Average number
1 (61)	54/12.2	8/1.5	3/12.2	2/1.5

100 ° Xxxxx xxxxx xxxxx; #Premix supplies per kg:DM, dry matter; DE, digestible energy.

101

102 Table 1. Mander's co-localization coefficients, at 30 min and 24 h.

Mander's co-localization coefficients	Control 30 min	10 ng/mL leptin 30 min	100 ng/mL leptin 30 min	Control 24 h	10 ng/mL leptin 24 h	100 ng/mL leptin 24 h
tM1	0.572 (57%) ± 0.049 (5%)	0.577 (58%) ± 0.042 (4%)	0.529 (53%) ± 0.046 (5%)	0.452 (45%) ± 0.050 (5%)	0.456 (46%) ± 0.040 (4%)	0.487 (49%) ± 0.044 (4%)
tM2	0.497 (50%) ± 0.030 (3%)	0.561 (56%) ± 0.020 (2%)	0.542 (54%) ± 0.022 (2%)	0.536 (54%) ± 0.028 (3%)	0.480 (48%) ± 0.024 (2%)	0.511 (51%) ± 0.020 (2%)

103

104

tM1, fractional co-localization coefficient for F-actin; tM2, fractional co-localization coefficient for cofilin; mean ± SEM; n=28-30 per group.

***Tables:** Tables are numbered consecutively in Arabic numbers without “no.” before the number. References should be made in the text to each table. The desired style of presentation can be found in the above sample and in published articles. Titles of tables should be descriptive enough to be able to stand alone. **Do not present the same data in tabular and graphic form.** There's no limited tables number, but they must be in a reasonable number.

Table footnotes: please use the following symbols, in this order, for callouts:

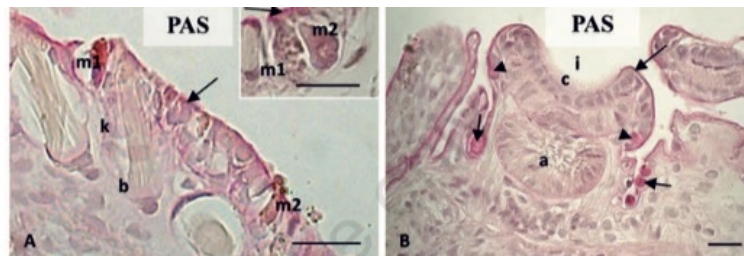
- °
- #
- §
- ^
- \$

manuscript example

105 Table 3. XXXXXXXXXXXXXXXXXXXX XXXXX.

106 Table 4. XXXXXXXXXXXXXXXXXXXX XXXXX.

manuscript example



107 Figure 1. Immunohistochemistry analysis of CD44, CD44v6, CD24, and ALDH1
108 expression in tumor samples.

109
110

***Figures:** Figures are numbered consecutively in Arabic numbers. References should be made in the text to each figure. Each figure should have a caption. The term “figure” is used also for graphs and photos. Symbols and abbreviations used in figures can be defined in the figure caption or note or within the figure itself. Lettering of figures (letters, numbers, symbols, etc.) must be clearly labelled and sized in order to remain legible after the image is reduced for publication. Please avoid the use of **bold** face or **greater size** for the characters. The figures must be submitted as .tiff or .jpg files, with the following digital resolution:

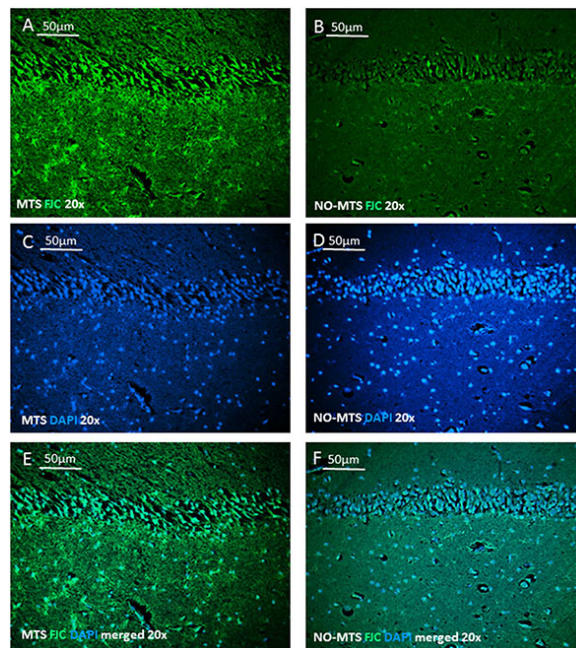
Colour (saved as CMYK): minimum 300 dpi

Black and white/grays: minimum 600 dpi

one column width (8.5 cm) or 2 column widths (17.5 cm).

Combined figures: if the figure contains two or more panels or subpanels, make sure a description for each panel is provided, in the order in which they are presented. Different panels should be identified by capital letters and a description of each panel should be identified in the figure legend by the related capital letter in brackets. If symbols are used, make sure such symbols are clearly distinguished from the letters used to identify each panel. See **Figure 2 below as an example**.

manuscript example



111 Figure 2. Human adult XXXXXX staining of XXXXX neurodegeneration, magnification
112 20x. A) Monolateral temporal post-traumatic epilepsy with left mesial temporal sclerosis;
113 B) Controlateral temporal lobe in absence of neurodegeneration; C) DAPI in blue of left
114 MTS; D) DAPI in blue of contralateral side. E, F) merged view of A-C and B-D.